

Kensington  
Balustrade  
Systems

UNIQ  
SMART BALUSTRADES

UNIQ  
SB-A2S

a smart balustrade masterpiece



KM 686207  
BS 6180:2011



bimobject®



# UNIQ

*the smartest profile for glass balustrades*

The new generation of glass balustrade profiles isn't just called UNIQ. The patented clamping of the glass without wedges and rubbers, the adjustability on rough surfaces, the hollow design and the quick and easy assembly are all unique and smart characteristics that save time and money.

UNIQ provides the perfect profile for any balustrade. Suitable for assembly on or against the floor, for finished or rough concrete, steel or wood floors, and for line loads of 0.36, 0.74, 1.5 and 3kN/m.

The detailed information in this brochure is also available on the website [www.uniq-balustrades.com](http://www.uniq-balustrades.com)

UNIQ profiles are an innovation from SB-Railing, part of IMS Nederland. Since 1954, this company has been providing semi-manufactured steel, stainless steel and aluminum products.

[www.ims-nederland.biz](http://www.ims-nederland.biz)

IMS Nederland B.V. is  
ISO 9001:2008 and CE certified.



# TESTS | CERTIFICATIONS

UNIQ profiles have been tested by BSI



KM 686207  
BS 6180:2011



## Kitemark™ Certificate



This is to certify that:

IMS Nederland B.V.  
Gildenweg 21  
3334 KC Zwijndrecht  
The Netherlands

Holds Certificate Number:

KM 686207

In respect of:

**BS 6180:2011**  
**Protective Barrier Systems constructed from metal and glass**

This issues the right and licence to use the Kitemark in accordance with the Kitemark Terms and Conditions governing the use of the Kitemark, as may be updated from time to time by BSI Assurance UK Ltd (the "Conditions"). All defined terms in this Certificate shall have the same meaning as in the Conditions.

The use of the Kitemark is authorized in respect of the Product(s) detailed on this Certificate provided at or from the above address.

Chris Lewis - Certification Director, Product Certification

For and on behalf of BSI:

First Issued: 2018-08-23  
Latest Issue: 2018-08-23

Effective Date: 2018-08-23  
Expiry Date: 2021-08-22

Page: 1 of 2



...making excellence a habit™

This certificate has been issued by and remains the property of BSI Assurance UK Ltd, Kitemark Court, Davy Avenue, Knowlhill, Milton Keynes MK5 8PP, United Kingdom and should be returned immediately upon request. To check its validity telephone +44 (0) 345 080 9000. An electronic certificate can be authenticated [online](#).

BSI Assurance UK Limited, registered in England under number 7805321 at 389 Chiswick High Road, London W4 4AL, UK. A member of BSI Group of Companies.

## Kitemark™ Certificate

No. KM 686207

**BS 6180:2011 - Barriers in and about buildings.**

**This certificate covers the following barrier systems**

System	Suitability/Duty Rating
SB-O 0.5S	BSI report ref. 8871705
SB-O 1S	BSI report ref. 8871705
SB-O 1	BSI report ref. 8871705
SB-O 2	BSI report ref. 8871705
SB-O 3	BSI report ref. 8871705
SB-A 1	BSI report ref. 8871705
SB-A 2	BSI report ref. 8871705
SB-A 3	BSI report ref. 8871705

First Issued: 2018-08-23  
Latest Issue: 2018-08-23

Effective Date: 2018-08-23  
Expiry Date: 2021-08-22

Page: 2 of 2

This certificate has been issued by and remains the property of BSI Assurance UK Ltd, Kitemark Court, Davy Avenue, Knowlhill, Milton Keynes MK5 8PP, United Kingdom and should be returned immediately upon request. To check its validity telephone +44 (0) 345 080 9000. An electronic certificate can be authenticated [online](#).

BSI Assurance UK Limited, registered in England under number 7805321 at 389 Chiswick High Road, London W4 4AL, UK. A member of BSI Group of Companies.





# UNIQUE CLAMPING STRIP

The patented, continuous clamping strip makes the UNIQ system truly unique. With this clamping strip, the way the glass is held in place is substantially different from other systems, which brings significant benefits.



## UNIQUE IN MOUNTING AND POSITIONING POSSIBILITIES

The assembly is also unique. In addition to structural anchors, the profiles are mounted with a second row of anchors so that it can be leveled. Because the inside of the profile is square, the glass will stand straight. The glass is completely and evenly clamped with the patented clamping strip, which avoids high tension in the glass. By adjusting the set / locking bolts of the clamping strip, small deviations in the position or thickness of the glass can be solved.

## DOUBLE SAFETY

The continuous clamping strip is secured in two places. Cogging on both the clamping strip and the profile works as the first locking. The tightening of the specially designed bolts ensures the second locking. The glass is now safely secured and can't come loose.

Gently tapping the clamping strip



**SAFETY COMBINED WITH  
EASY MOUNTING:  
THAT'S UNIQ**

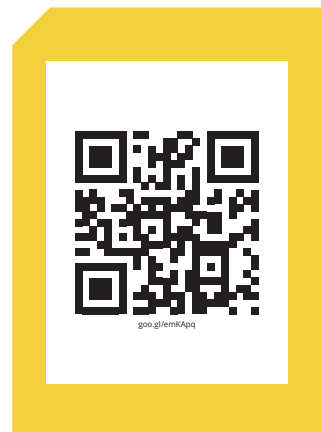


By adjusting the set / locking bolts of the clamping strip, small deviations in the position or thickness of the glass can be solved.



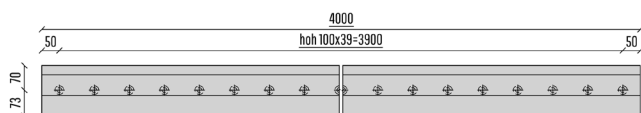
The continuous clamping strip is clearly visible

## MOUNTING UNIQ STEP BY STEP



Check the instruction video

# UNIQ SB-A2S | SIDE MOUNTED 1.5 KN



## BASE PROFILE

- 2090414 SB-A2S Brute
- 2090415 SB-A2S Stainless look

**L**  
4000 mm  
4000 mm

Easy mounting because of the separate leg on the outside of the profile

## GLASS MOUNTING SET (GMS)

- 2090377 GMS-L5 - 12/12/pvb
- 2090378 GMS-XL5- 10/10/pvb
- 2090378 GMS-XL5 - 19

**L**  
4000 mm  
4000 mm  
4000 mm

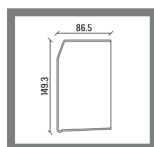
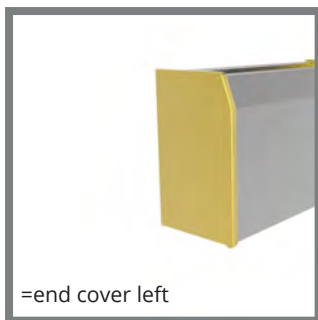
Content:  
Clamping strip + glass blocks + required packing

## REAR COVER

- |         |                                      | <b>B</b> | <b>L</b> |
|---------|--------------------------------------|----------|----------|
| 2089108 | CR-XXL1 - 10/10/pvb - Brute          | 28       | 4000 mm  |
| 2089360 | CR-XXL1 - 10/10/pvb - Stainless look | 28       | 4000 mm  |
| 2089106 | CR-XL1 - 12/12/pvb - Brute           | 25       | 4000 mm  |
| 2089359 | CR-XL1 - 12/12/pvb - Stainless look  | 25       | 4000 mm  |
| 2089620 | CR-XXL3 - 19 - Brute                 | 31       | 4000 mm  |
| 2089622 | CR-XXL3 - 19 - Stainless look        | 31       | 4000 mm  |

## OPTIONAL FOR REAR COVER

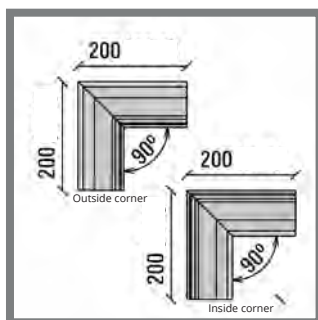
- |         |                           | <b>L</b> |
|---------|---------------------------|----------|
| 1012309 | Rubber for the cover rear | 1000 mm  |



## END COVERS

- 2090547 SB-A2S end cover left, Brute
- 2090412 SB-A2S end cover left, Stainless look
- 2090548 SB-A2S end cover right, Brute
- 2090413 SB-A2S end cover right, Stainless look

Small color differences between end caps and profiles are possible.



## CORNER PIECES

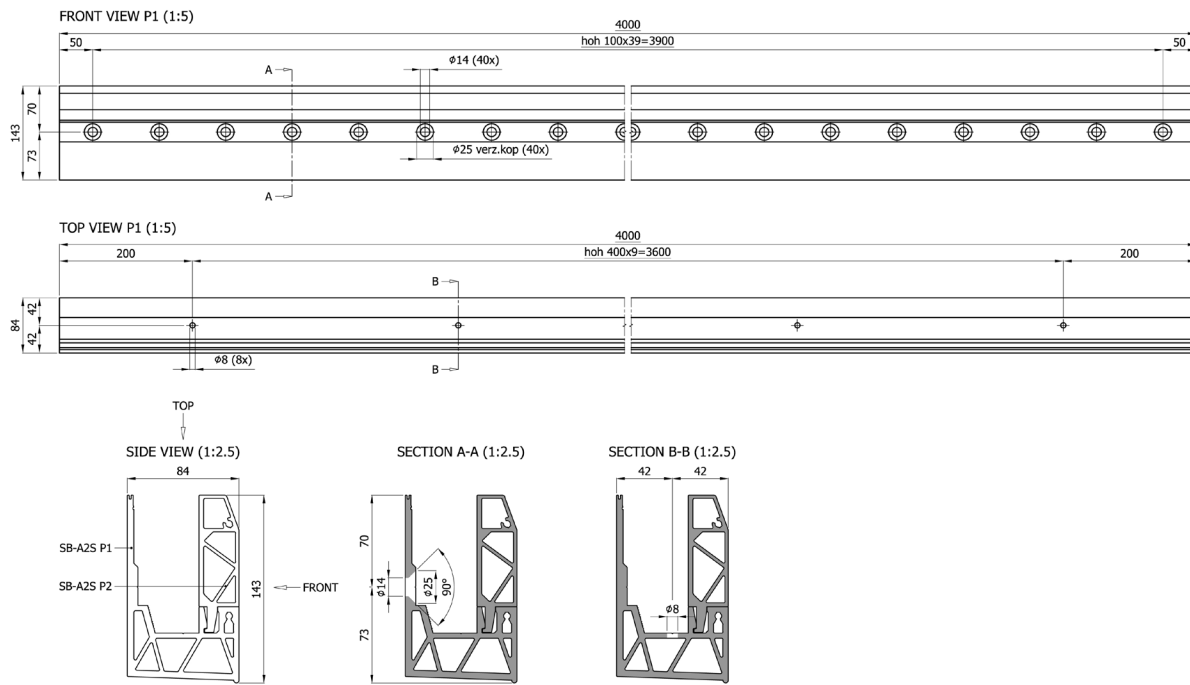
- 2090620 SB-A2S Outside corner Brute
- 2090619 SB-A2S Outside corner Stainless look
  
- 2090597 SB-A2S Inside corner Brute
- 2090598 SB-A2S Inside corner Stainless look



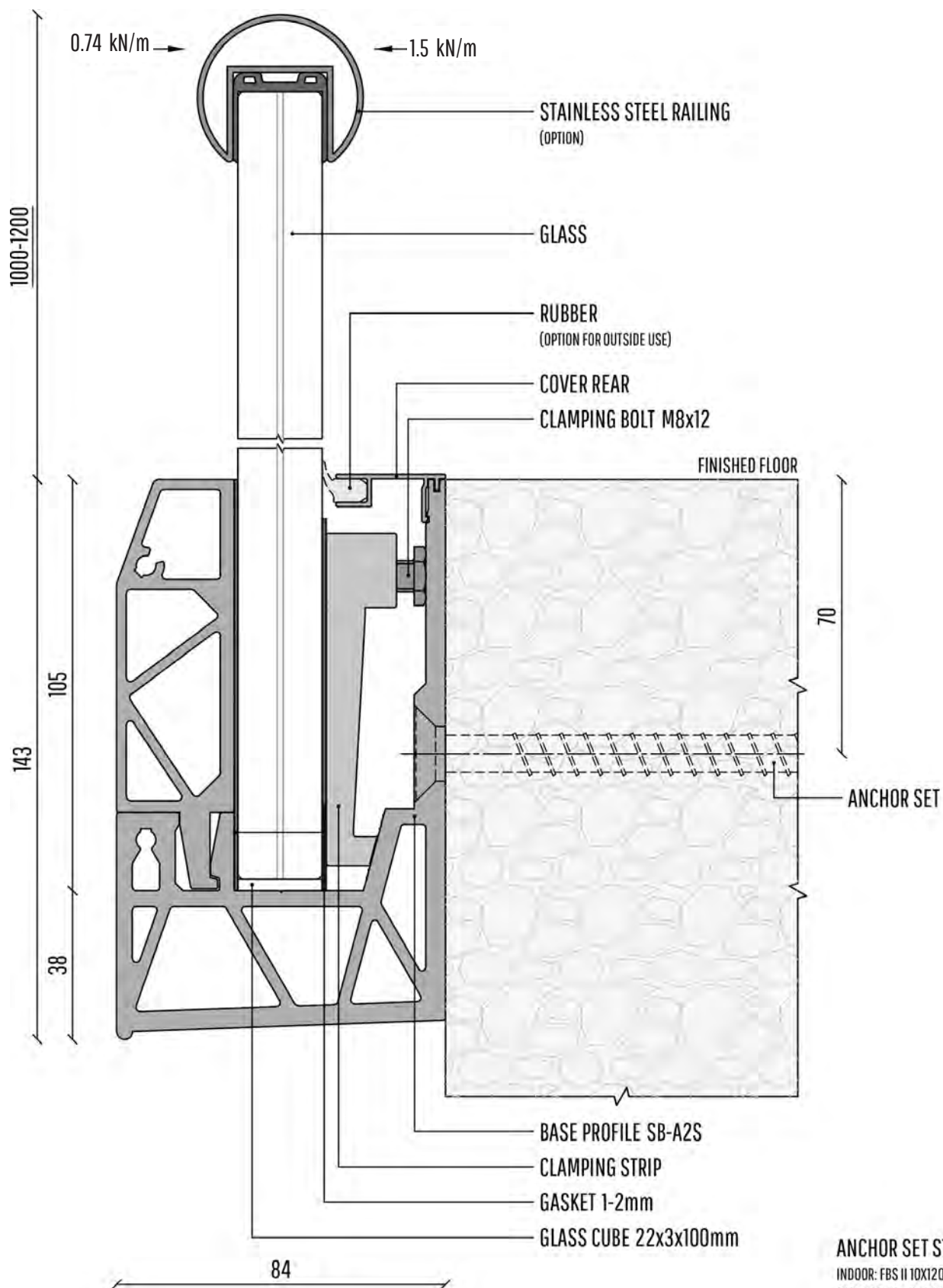
## ANCHOR SB-A2S

- 2089821 FBS II 10x120/35 SK Concrete screw indoor
- 2074809 FBS II 10x120/35 SK Concrete screw A4 outdoor

# UNIQ SB-A2S | INFO







#### ANCHOR SET STANDARD

INDOOR: FBS II 10X120/35 SK

OUTDOOR: FBS II 10X120/35 SK A4

ALTERNATIVE: M10 BOLT AT A STEEL CONSTRUCTION

# MOUNTING TOOLS



## TAPPING TOOL

2089137 Tapping tool



## MOUNTING WRENCH

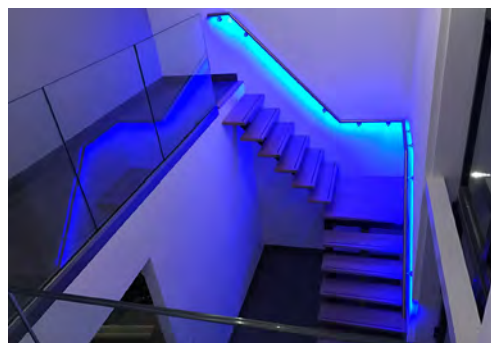
2089138 Mounting wrench



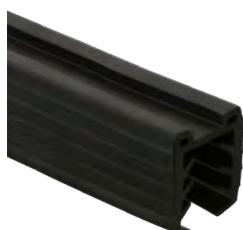
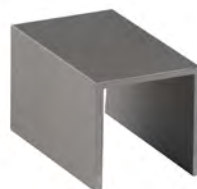
## CONNECT PIN

2089139 Connect pin

## FOR THESE PROJECTS UNIQ IS CHOSEN!



ALSO AVAILABLE



[WWW.SB-RAILING.COM](http://WWW.SB-RAILING.COM)



**KENSINGTON TRADERS LIMITED**

23-25 RIBOCON WAY  
PROGRESS PARK, LUTON,  
BEDFORDSHIRE LU4 9UR, UK  
T: 01582 563 794  
[WWW.BALUSTRADE-SYSTEMS.COM](http://WWW.BALUSTRADE-SYSTEMS.COM)

Kensington  
Balustrade  
Systems



SEPTEMBER 2020  
ENGLISH  
[WWW.UNIQ-BALUSTRADES.COM](http://WWW.UNIQ-BALUSTRADES.COM)